

Instructions - G320RC 30mm (+2mm) crankshaft

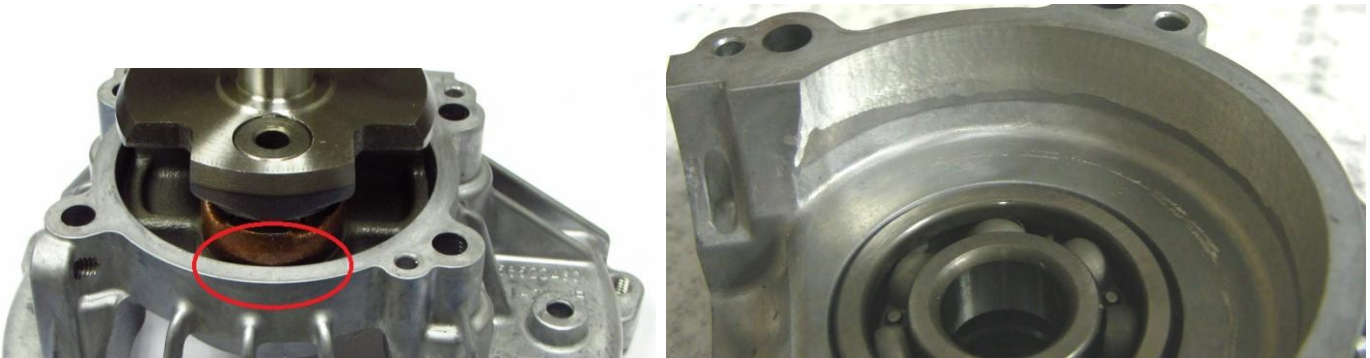
Congratulations on your purchase of a +2mm stroker crankshaft for your Zenoah G320RC engine!

Please note the following before installing:

1. Your stock factory Zenoah G320RC cylinder is designed for use with the stock 28mm stroke crankshaft. Changing to this +2mm crankshaft requires modifying the squish on your cylinder to accommodate the longer stroke. We recommend that the cylinder be modified, this is a far better solution than stacking gaskets to get the added clearance. Pre-modified cylinders are also available for purchase at www.davesmotors.com

2. To install this crankshaft, a very small bit of crankcase material must be removed so the lower end of the connecting rod will not rub on the case. This is easy to do, and can be done with a Dremel tool.

(see photos)



The lower rod of the +2mm crankshaft (since it sits 1mm lower than the stock rod location) makes it slightly rub on the crankcase. Before using this crankshaft, it is essential that you remove a small amount of crankcase material to free up space so the rod does not hit. Once you do this, be certain you COMPLETELY clean the crankcase so it is free of any debris or shavings! Any small pieces of debris or metal left in your crankcase could damage your engine.

MAKE SURE YOU COVER YOUR BEARINGS WITH TAPE WHEN USING THE DREMEL TOOL, SO NO SHAVINGS GET IN YOUR BEARINGS. ALSO, COMPLETELY CLEAN THE CASE OF ANY SHAVINGS WHEN FINISHED! Before running the engine, make 100% sure the crankshaft is not rubbing any part of the crankcase. Failure to do so will damage your engine.

Enjoy the added torque your engine will get with this +2mm stroker crankshaft modification!